

# COSPOLICH



**R30-2M-S (SN)-MLR**

**MODEL NUMBERS:**

- |              |               |          |
|--------------|---------------|----------|
| R22-2M-S-MLR | R22-2M-SN-MLR | MIL SPEC |
| R25-2M-S-MLR | R25-2M-SN-MLR | MIL SPEC |
| R30-2M-S-MLR | R30-2M-SN-MLR | MIL SPEC |

**CABINET CONSTRUCTION**

Exterior and interior of all standard cabinets, including front, sides, doors and louvered grill are constructed of heavy gauge, type 304 stainless steel.

Special attention was taken in engineering the doors of the Cospolich cabinet. The door unit was designed to withstand the continuous use and abuse that is common in all food service applications.

Resilient vinyl gaskets, which are pre-formed in frames with welded corners, greatly inhibit bacterial growth and are easily replaceable.

Heaters, which are concealed under the thermal breaker strip around the door perimeter, prevent condensation.

Interior lighting, a standard item in all refrigerator compartments, is activated by the door opening.

**INSTALLATION**

As an aid to installation, a foundation for securing the cabinet to the deck is an available option. Installation instructions and a manual are furnished with the unit.

**HARDWARE**

Positive latches with magnetic back-up are included on all standard cabinets to assure positive latching and sealing. Incorporated into the latch is a replaceable, keyed cylinder lock.

Heavy duty, adjustable, chrome plated hinges are provided on all standard cabinets. Also available, at no extra cost, are 180 degrees self-closing, cam-lift hinges with stay-open feature at 93 degrees.

Cabinet body and doors are insulated with foamed-in-place polyurethane foam, providing for excellent rigidity and the best insulating properties in the industry.

**REFRIGERATION SYSTEM**

All components of the refrigeration system, with the exception of the evaporator, are bottom mounted on a heavy duty base frame behind a louvered grill which is easily removable without the use of tools. The condensing unit is mounted on a slide out rail for ease in cleaning and servicing.

All evaporator coils are copper tube, and all AC voltage models have forced-air ventilation. The refrigerant flow is monitored by an expansion valve for effective cooling and quick recovery times. A condensate evaporator is provided, thus eliminating the need for additional plumbing.

Temperature of the cabinet is factory adjusted, and the controls, along with an on/off switch are located in the condensing unit area.

**SHELVING**

Standard interior shelving consists of heavy-duty epoxy-coated steel wire with front rail. Each shelf is adjustable in one-inch increments. Stainless steel shelving and brackets are also available.

**SERVICE AID**

An optional service kit, including spare parts and installation instructions, is available for each model.

**U.L. and U.S.P.H**

The equipment is listed by Underwriter's Laboratories, Inc. for safety and sanitation and is built according to standards as set forth by the U.S. Public Health Services.

**THIS UNIT AVAILABLE IN OUR SPECIAL MODULAR CONSTRUCTION**

**FEATURES**

- Stainless steel interior and exterior (exposed)
- Oversized refrigeration system
- Anti-condensate door heaters
- Heavy-duty chrome-plated hardware
- Automatic activated interior lighting
- Door with adjustable alignment
- Epoxy coated adjustable shelving with front rails
- Removable grill
- Polyurethane insulation
- Slide-out condensing unit
- Resilient gaskets
- Exterior LED thermometer
- Condensate Evaporator Pan

**OPTIONS**

Same options available as offered on the standard construction.

**THE MODULAR CONCEPT**

This series of modular refrigerators was engineered and constructed to solve the problem of replacing existing failed equipment. Unique to the industry, these units, which comprise a series of interlocking components, brought new meaning to the term "hatchable" equipment. This innovative design allows for equipment upgrades without having to cut access ways in decks and bulkheads or having to modify passage ways.

[www.cospolich.com](http://www.cospolich.com)

CONTACT FACTORY FOR  
YOUR SPECIFIC CAPACITY  
REQUIREMENTS

**Quality & Innovation Since 1937**

# MODULAR REFRIGERATORS

## MODEL NUMBERS:

R22-2M-S-MLR    R22-2M-SN-MLR MIL SPEC  
 R25-2M-S-MLR    R25-2M-SN-MLR MIL SPEC  
 R30-2M-S-MLR    R30-2M-SN-MLR MIL SPEC

DIMENSIONAL DATA	R22-2M-S(SN)-MLR	R25-2M-S(SN)-MLR	R30-2M-S(SN)-MLR
Net Capacity (cu ft / ltr)	22 / 623	28 / 793	33 / 935
Width Overall (in / mm)	36 / 914	48 / 1219	48 / 1219
Depth Overall (in / mm)	27 / 686	27 / 686	31 / 787
Height Overall (in / mm)	72 / 1829	72 / 1829	72 / 1829
Interior Width (in / mm)	31 / 787	43 / 1092	43 / 1092
Interior Depth (in / mm)	22.5 / 572	22.5 / 572	26.5 / 673
Interior Height (in / mm)	50.25 / 1276	50.25 / 1276	50.25 / 1276
Depth Over Body (in / mm)	26 / 660	26 / 660	30 / 762
OA Depth with Door Open 90° (in / mm)	42 / 1067	49 / 1245	53.75 / 1365.25
Clear Door Width (in / mm)	13 / 330	19 / 483	23.75 / 603.25
Clear Full Door Height (in / mm)	48.25 / 1226	48.25 / 1226	48.25 / 1226
Number of Doors	2	2	2
Number of Shelves	6	6	6
Shelf Area (sq ft / sq m.)	19 / 2	26 / 2	31 / 3
Weight (lbs / kg)	400 / 108	450 / 204	500 / 225

### ELECTRICAL DATA

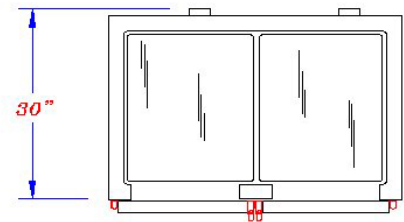
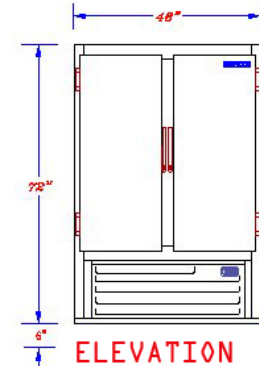
Voltage	115	115	115
RLA Amps / Rec Breaker	4.8 / 15 amp	4.8 / 15 amp	4.8 / 15 amp

### REFRIGERATION DATA

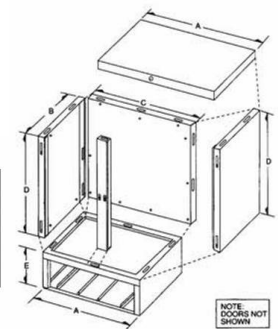
Compressor H.P.	1/3	1/3	1/3
BTU / HR - KCAL / HR at 90	2209 / 556	2209 / 556	2209 / 556

### SHIPPING DATA

Width-Crated (in / mm)	42 / 1067	54 / 1372	54 / 1372
Depth-Crated (in / mm)	36 / 914	36 / 914	35 / 889
Height-Crated (in / mm)	80.5 / 2045	80.5 / 2045	80.5 / 2045
Weight-Crated (lbs / kg)	580 / 263	622 / 282	698 / 316
Volume-Crated (cu ft / ltr)	50 / 1416	66 / 1869	79 / 2237



**HORIZONTAL**



	R22	R25	R30
*A*	36	48	48
*B*	25	25	29
*C*	22	41	41
*D*	48.5	48.5	48.5
*E*	20	20	20

**Naval Shipboard  
Models Available**

Model Shown  
R30-2M-S (SN)-MLR



[www.cospolich.com](http://www.cospolich.com)

Post Office Box 1206 • Destrehan, Louisiana 70047

Toll Free: 800-423-7761 • Local: 985-725-0222 • FAX: 985-725-1564